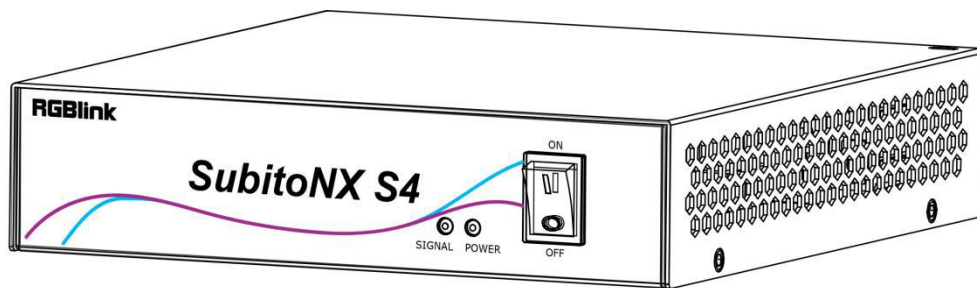


SubitoNX S2/S4



User Manual

RGBlink[®]



Content

Declarations.....	3
FCC/Warranty.....	3
Operators Safety Summary.....	4
Installation Safety Summary.....	4
Chapter 1 Your Product.....	6
1.1 In the Box.....	6
1.2 Product Overview.....	7
1.2.1 Front Panel.....	8
1.2.2 Rear Panel.....	9
1.2.4 Dimension.....	10
Chapter 2 Install Your Product.....	11
2.1 Connect the Sources.....	11
2.2 Connect the Power.....	11
2.3 Turn on Your Product.....	11
Chapter 3 Use Your Product.....	12
3.1 Software Installation.....	12
3.2 Log in XPOSE.....	15
3.3 Fine Device.....	16
3.4 Parameter Adjustment of Receiver Card and Sender Card.....	17
3.5 Upgrade.....	21
Chapter 4 Ordering Codes.....	23
4.1 Product.....	23
Chapter 5 Support.....	24
5.1 Contact Us.....	24
Chapter 6 Appendix.....	25
6.1 Specification.....	25
6.2 Terms & Definitions.....	25
6.3 Revision History.....	32

Thank you for choosing our product!

This User Manual is designed to show you how to use this video processor quickly and make use of all the features. Please read all directions and instructions carefully before using this product.

Declarations

FCC/Warranty

Federal Communications Commission (FCC) Statement

This equipment has been tested and found to comply with the limits for a class A digital device, pursuant to Part 15 of the FCC rules. These limits are designed to provide reasonable protection against harmful interference when the equipment is operated in a commercial environment. This equipment generates, uses, and can radiate radio frequency energy and, if not installed and used in accordance with the instruction manual, may cause harmful interference to radio communications. Operation of this equipment in a residential area may cause harmful interference, in which case the user will be responsible for correcting any interference.

Guarantee and Compensation

RGBlink provides a guarantee relating to perfect manufacturing as part of the legally stipulated terms of guarantee. On receipt, the purchaser must immediately inspect all delivered goods for damage incurred during transport, as well as for material and manufacturing faults. RGBlink must be informed immediately in writing of any complaints.

The period of guarantee begins on the date of transfer of risks, in the case of special systems and software on the date of commissioning, at latest 30 days after the transfer of risks. In the event of justified notice of complaint, RGBlink can repair the fault or provide a replacement at its own discretion within an appropriate period. If this measure proves to be impossible or unsuccessful, the purchaser can demand a reduction in the purchase price or cancellation of the contract. All other claims, in particular those relating to compensation for direct or indirect damage, and also damage attributed to the operation of software as well as to other service provided by RGBlink, being a component of the system or independent service, will be deemed invalid provided the damage is not proven to be attributed to the absence of properties guaranteed in writing or due to the intent or gross negligence or part of RGBlink.

If the purchaser or a third party carries out modifications or repairs on goods delivered by RGBlink, or if the goods are handled incorrectly, in particular if the systems are commissioned operated incorrectly or if, after the transfer of risks, the goods are subject to influences not agreed upon in the contract, all guarantee claims of the purchaser will be rendered invalid. Not included in the guarantee coverage are system failures which are attributed to programs or special electronic circuitry provided by the purchaser, e.g. interfaces. Normal wear as well as normal maintenance are not subject to the guarantee provided by RGBlink either.

The environmental conditions as well as the servicing and maintenance regulations specified in this manual must be complied with by the customer.

Operators Safety Summary

The general safety information in this summary is for operating personnel.

Do Not Remove Covers or Panels

There are no user-serviceable parts within the unit. Removal of the top cover will expose dangerous voltages. To avoid personal injury, do not remove the top cover. Do not operate the unit without the cover installed.

Power Source

This product is intended to operate from a power source that will not apply more than 230 volts rms between the supply conductors or between both supply conductor and ground. A protective ground connection by way of grounding conductor in the power cord is essential for safe operation.

Grounding the Product

This product is grounded through the grounding conductor of the power cord. To avoid electrical shock, plug the power cord into a properly wired receptacle before connecting to the product input or output terminals. A protective-ground connection by way of the grounding conductor in the power cord is essential for safe operation.

Use the Proper Power Cord

Use only the power cord and connector specified for your product. Use only a power cord that is in good condition. Refer cord and connector changes to qualified service personnel.

Use the Proper Fuse

To avoid fire hazard, use only the fuse having identical type, voltage rating, and current rating characteristics. Refer fuse replacement to qualified service personnel.

Do Not Operate in Explosive Atmospheres

To avoid explosion, do not operate this product in an explosive atmosphere.

Installation Safety Summary

Safety Precautions

For all product installation procedures, please observe the following important safety and handling rules to avoid damage to yourself and the equipment.

To protect users from electric shock, ensure that the chassis connects to earth via the ground wire provided in the AC power Cord.

The AC Socket-outlet should be installed near the equipment and be easily accessible.

Unpacking and Inspection

Before opening product shipping box, inspect it for damage. If you find any damage, notify the shipping carrier immediately for all claims adjustments. As you open the box, compare its contents against the packing slip. If you find any shortages, contact your sales representative.

Once you have removed all the components from their packaging and checked that all the listed components are present, visually inspect the system to ensure there was no damage during shipping. If there is damage, notify the shipping carrier immediately for all claims adjustments.

Site Preparation

The environment in which you install your product should be clean, properly lit, free from static, and have adequate power, ventilation, and space for all components.

Chapter 1 Your Product

1.1 In the Box



Note: Power Adapter supplied as British and Australian standards.

1.2 Product Overview

SubitoNX S2 supports two network port,with a maximum load capacity of 1.31million pixels;SubitoNX S4 supports four network output, with a maximum load capacity of 2.35 million pixels.Both support resolution up to 2048×1152@60 or custom resolution.



SubitoNX S2



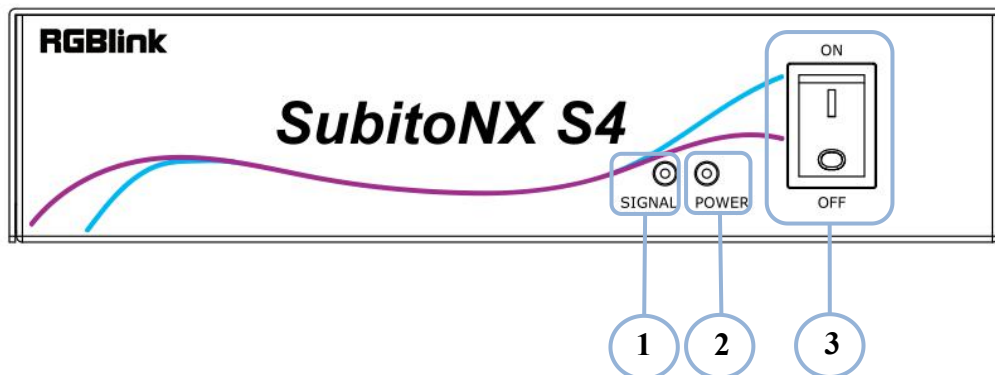
SubitoNX S4

Key Features

- LED display controller
- Each LAN port supports width up to 3840,height up to 1920
- Support custom resolutions
- Prestore multi sets of receiver parameters
- Connect image of different screen via one click
- Support color space switch and improve image consistency
- Data calibration,dual backup and restoration
- File readback and backup
- Dual ethernet hot backup
- Ethernet error code detection
- Support for splicing freely

1.2.1 Front Panel

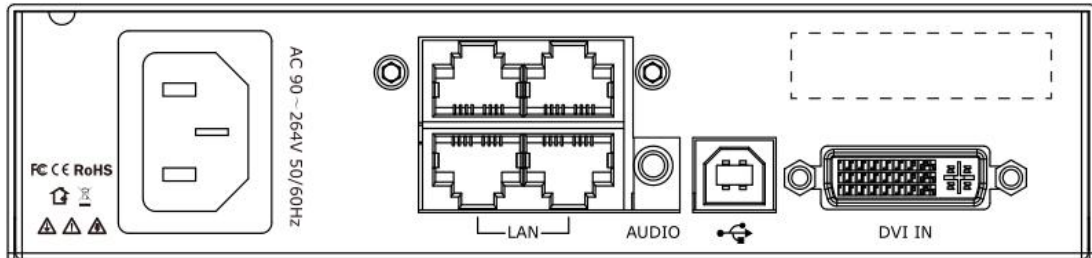
Take SubitoNX S4 as an example



No.	Item	Function
1	Signal Indicator	Successful connection:flash green;No signal:static green
2	Power Indicator	Static red
3	Power Switch	Turn on/off the device

1.2.2 Rear Panel

Take SubitoNX S4 as an example

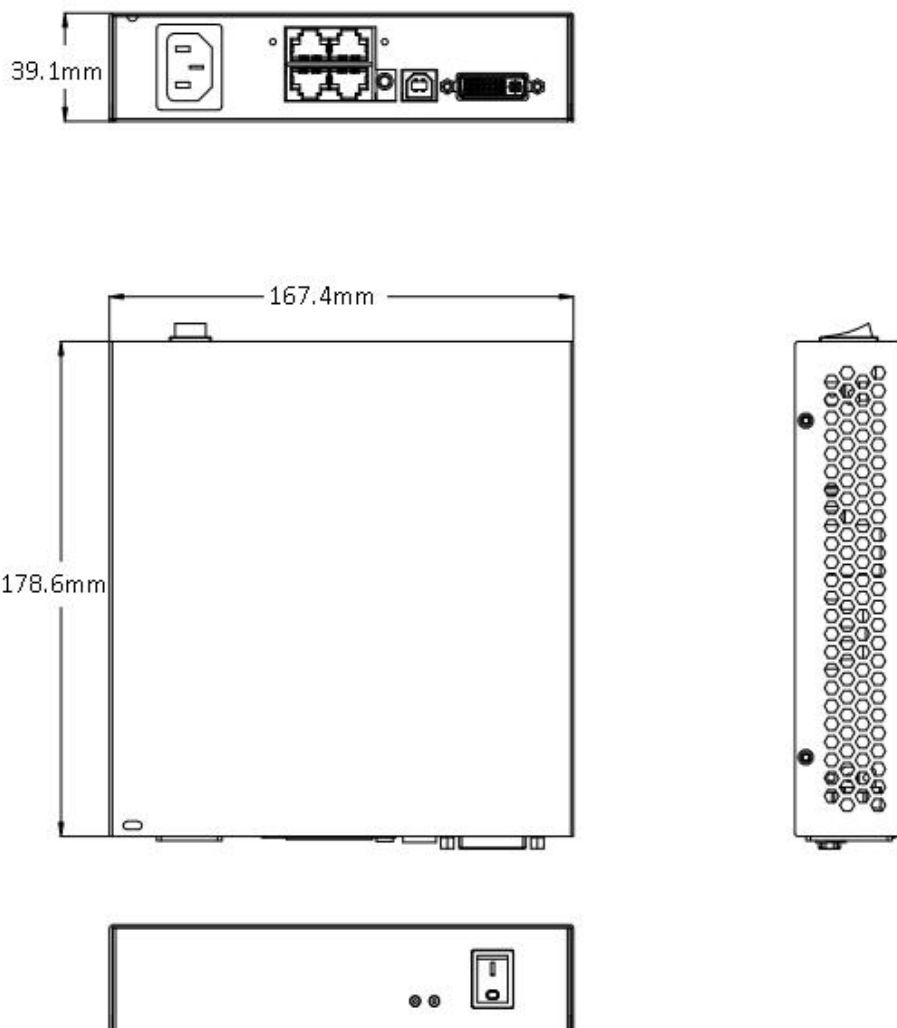


1.Input Connectors		
Connector	Number	Description
DVI	1	Support VESA standard input resolutions such as 1920×1080@60hz Support preset resolutions and custom resolutions
2.Output Connectors		
Connector	Number	Description
RJ45	4	<ul style="list-style-type: none"> ■ Load capacity up to 2.35m pixels ■ H MAX pixels:3840 pixels ■ V MAX pixels:1920 pixels
3.Audio Connectors		
Connector	Number	Description
3.5mm Audio Jack	1	Connect audio input
4.Communication Connectors		
Connector	Number	Description
LAN	1	Connect control device

1.2.4 Dimension

Following is the dimension of SubitoNX S4 for your reference:

Dimension of SubitoNX S2/S4:178.6mm×167.4mm×39.1mm



Chapter 2 Install Your Product

Since SubitoNX S2 and SubitoNX S4 only have the difference in the number of output network ports, other functions and operations are the same. Therefore, SubitoNX S4 is taken as an example to introduce in the following chapters.

2.1 Connect the Sources



Connect signals to the product (ensure all devices are powered off first).
Tighten connector screws/locks where provided.

2.2 Connect the Power

Connect power cable to device and plug into wall socket. Turn on power at wall socket.

2.3 Turn on Your Product

Press the power button.

The device enter initializing state will load the previously saved setting.

Chapter 3 Use Your Product

3.1 Software Installation

Environment Requirements:

Window

Processor: 1 GHz or above 32 bit or 64 bit processor

Memory: 4 GB or more

Graphics: Support Direct X9 128M or above (open AERO effect)

Hard disk space: Above 16G (primary partitions, NTFS format)

Monitor: Resolution must be 1920×1080 pixel or above(it can not display normally if the resolution is lower than 1920×1080)

Operating system: Windows 7 or above (full version, not Ghost version or compact version)


CPU:i5 and above

Mac

Monitor:Resolution must be 1680×1050 pixel or above(it can not display normally if the resolution is lower than 1680×1050)

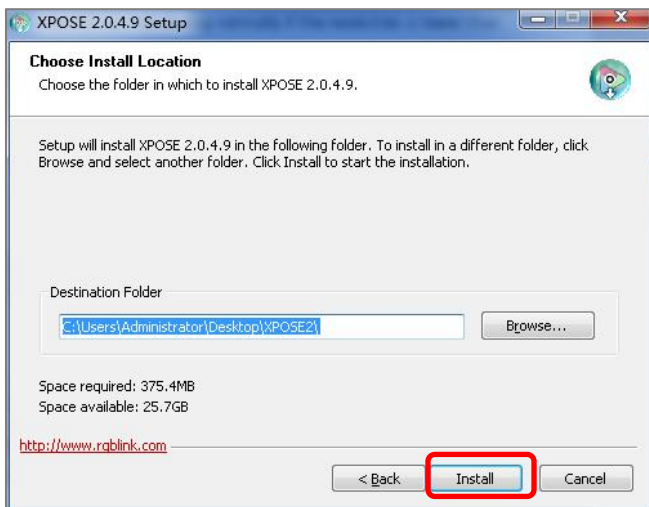
CPU:i5 and above



1. Double click , it will pop-up the installer language box, select the language, for example, select <English>, and click <OK> to confirm.

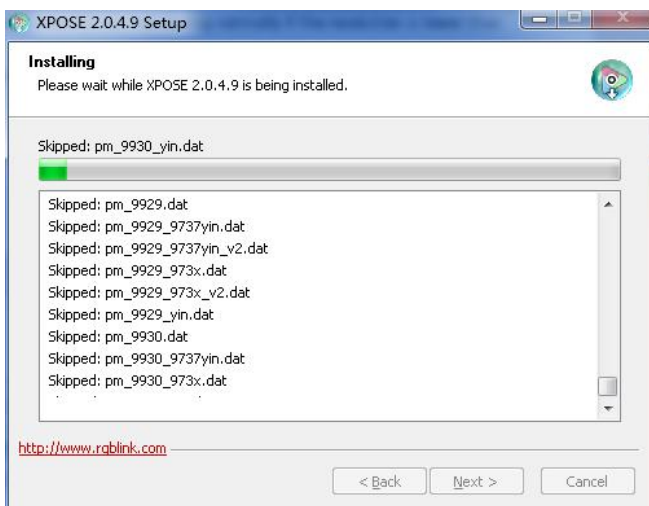


2. Click <Next> to install

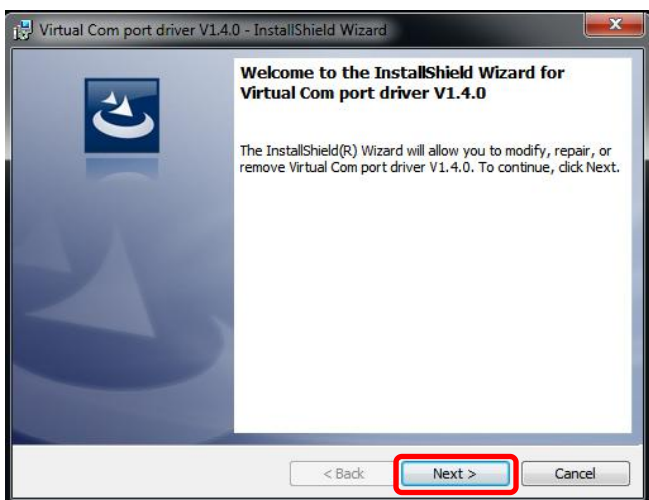


3. Click <Browse...>to select the XPOSE software install location

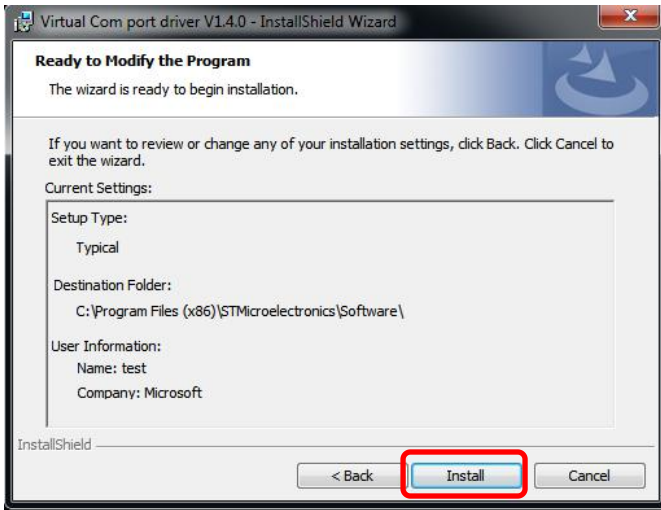
Click <Install>



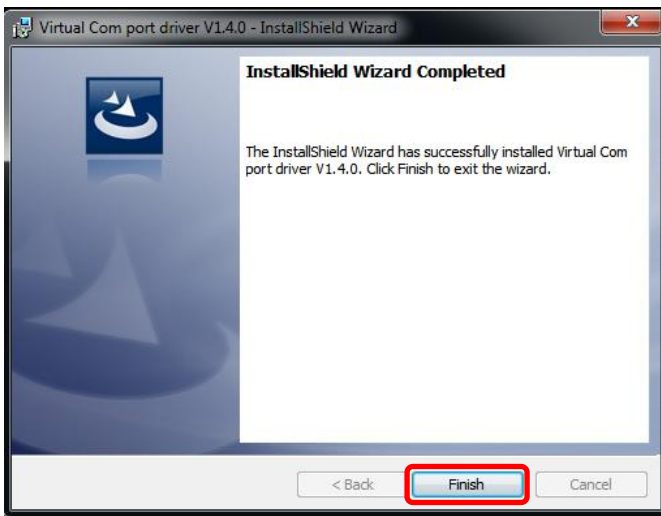
4. During installation, it will pop up the window of Install Shield Wizard for Virtual Com port



5. Click <Next>



6. Then click <Install>, as shown in the figure

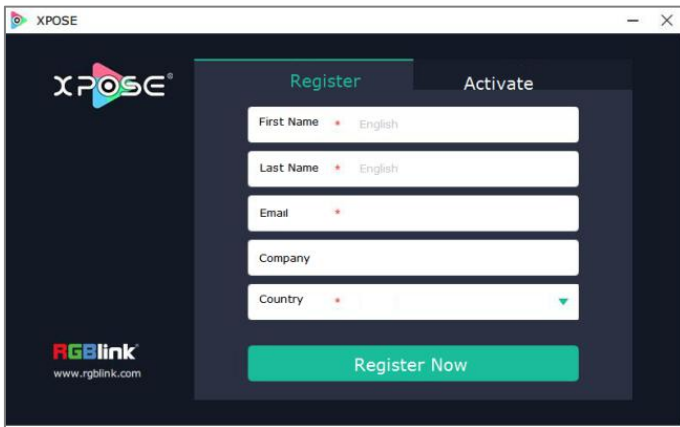



7. Click <Finish> and complete the installation, as shown in the figure below



8. Click <Finish> and is ready to run the XPOSE software

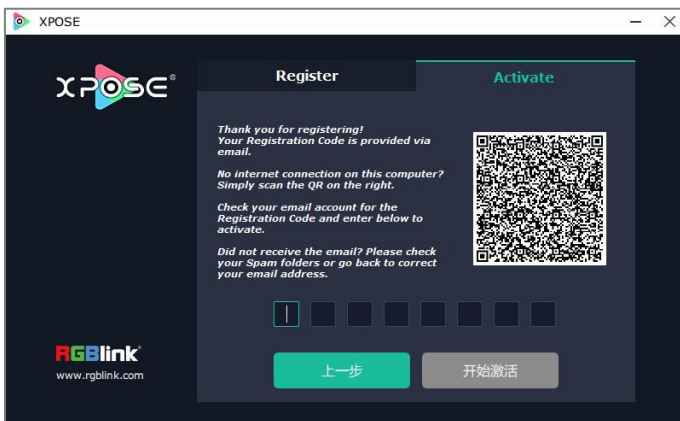
3.2 Log in XPOSE



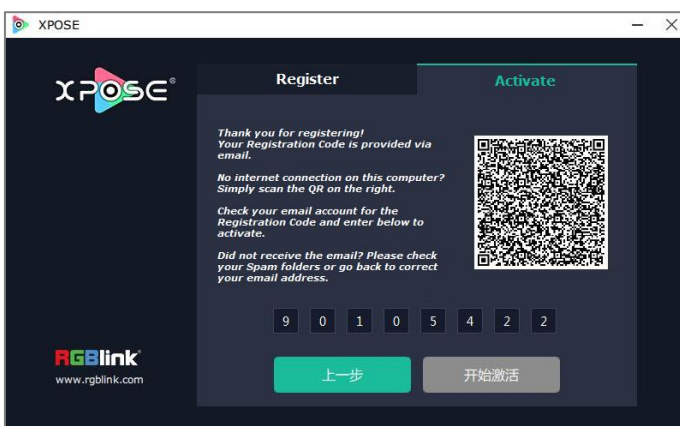
1. Double click this icon , and enter the log on interface as the picture.

The initial language of XPOSE 2.0 is self adjusted based on the operation system language of the computer. Click Register and fill in the blank with first name, last name, email, company and country and then click Register Now.

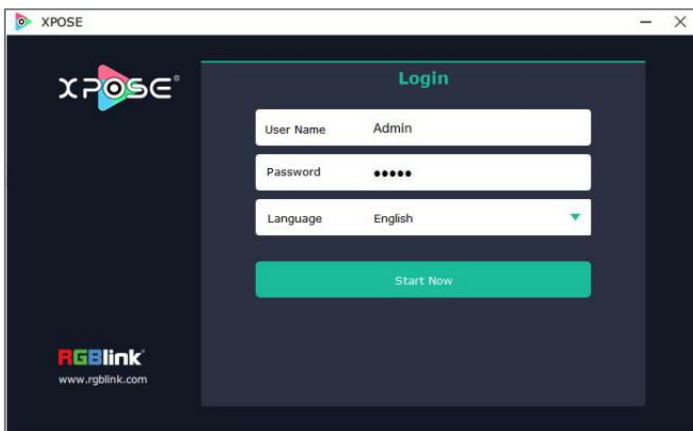
Note:The email shall be invalid and complete otherwise Registration&Activation code cannot be received.



2. Click **Activate** and scan the QR code
An email from **RGBlink Registrations** will be sent to the **Register** email address.

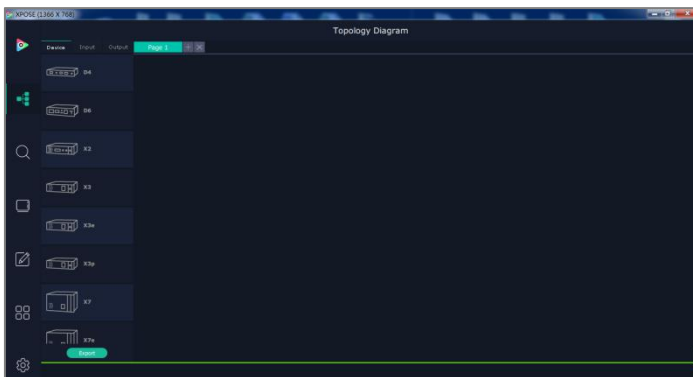


3. Type in the activate code and **confirm**.



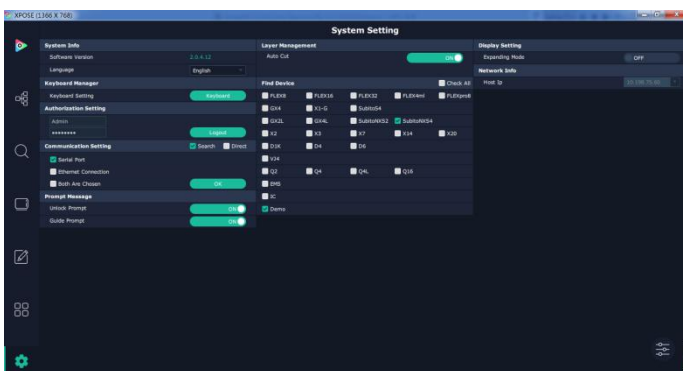
4. Keep the user name as <Admin> and password blank and then click **Start Now**.


If exact Name and Password are needed, users can set up them in Authorization Setting under System Setting.

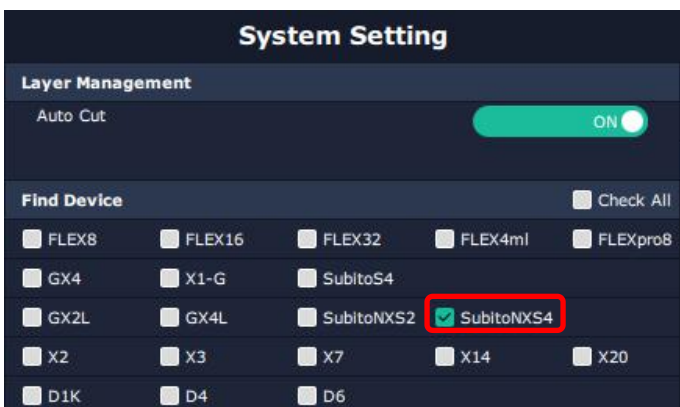


5. After login, users can find the management including:Topology Diagram,Search,Display System,Layer Management, Preset Management, Keyboard Settings. The details of each hierarchy will be described hereafter.

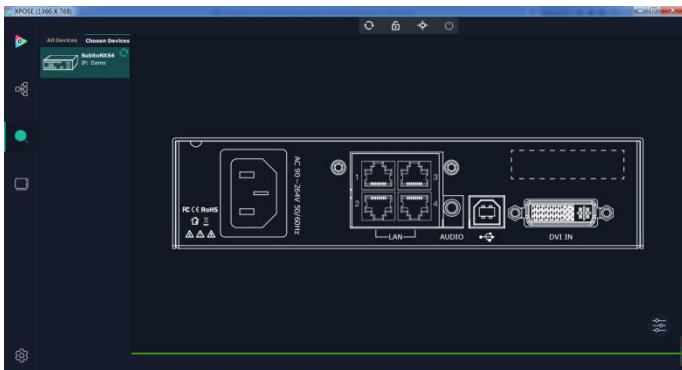
3.3 Fine Device




1. Click  to enter <System Setting>interface.




2. New version of XPOSE 2.0 is blank default in Find Device. Users are supposed to choose the device needed in System Setting.

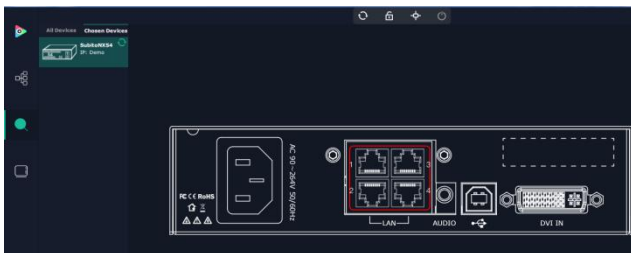


3. Click  to enter interface as shown in the left figure:

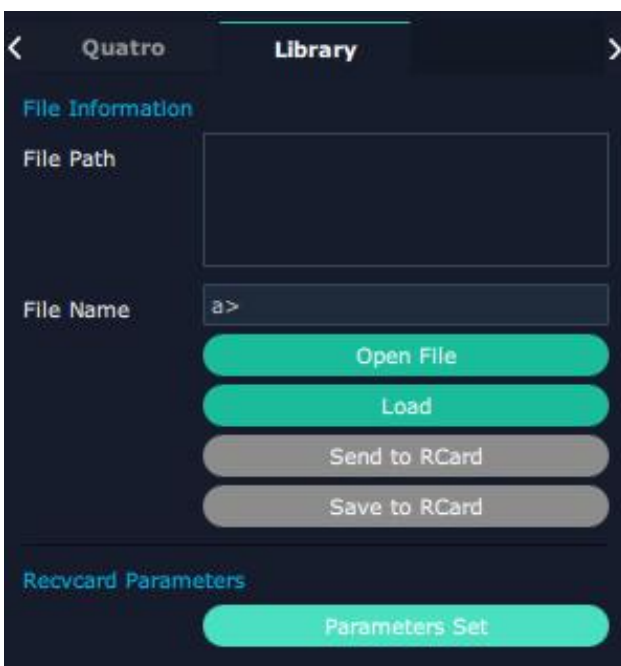


4. Click the device you need in the <All Devices> list, and click  in <Chosen Devices>, then GX4L will show in the main interface.

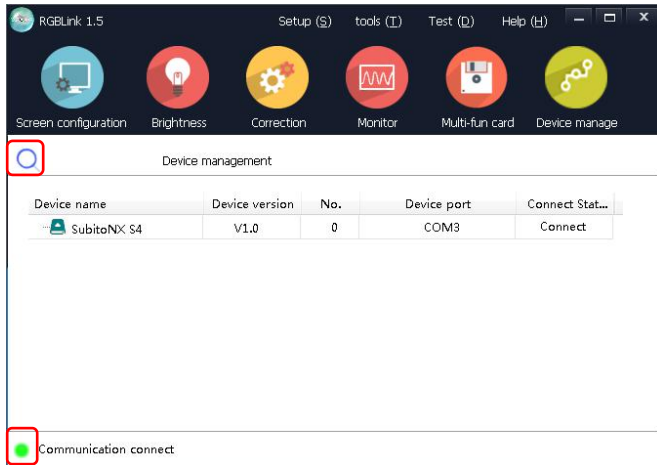
3.4 Parameter Adjustment of Receiver Card and Sender Card




Click the LAN port in rear panel

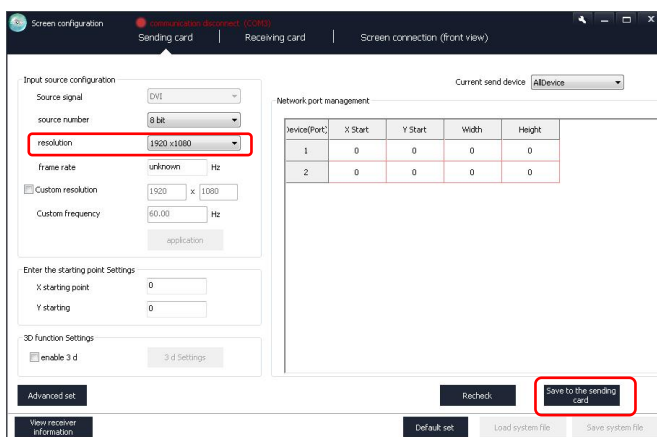


Click <Library>-<Parameters Set> to enter the interface of parameter adjustment



1. Check the connection status of device.

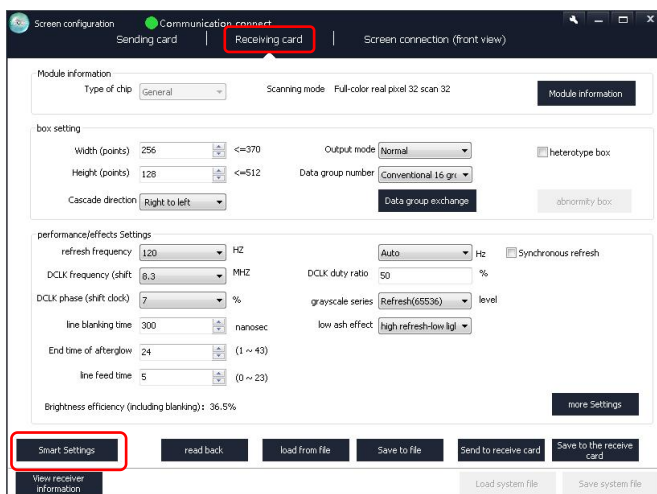
Every time when you unplug the card, please click  to search the device again.



2. Click <Screen Configuration> to enter Sending Card interface.

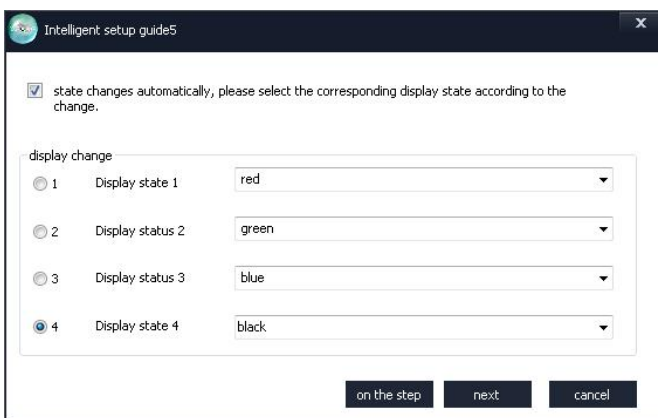
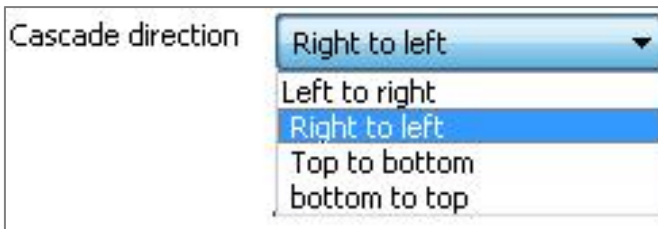
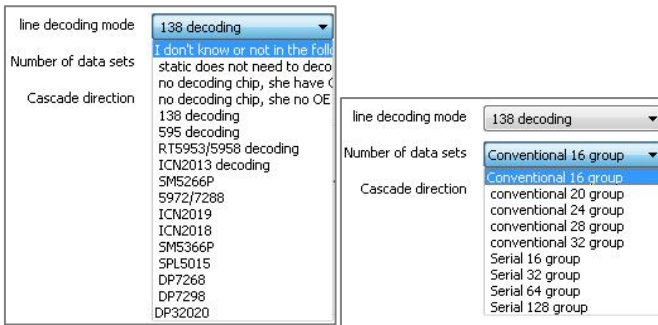
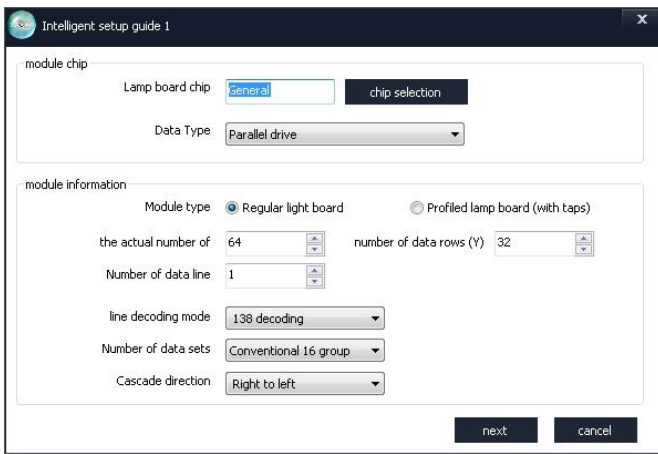
Please ensure that the **resolution** of sending card should be the consistent with that of your computer.

Note:After setting the sending card, it is necessary to click <Save to the sending card>, otherwise the previous setting will be lost after power off and restarting.



3. Click <Receiving Card> to enter the interface as shown in the left figure.

4. Click <Smart Settings> to set receiving card.



5. **Chip selection:**select the chip for the corresponding module.

Data Type:It is generally to choose parallel driver for common modules by default (If you would like to customize some modules needed to select serial data, please contact with our company.

Module Type: If width of single module is 16, then choose<Regular light board>. If not, then choose<Profiled lamp board(with taps)>.

the actual number of:the width of single module

Number of data rows:the height of single module

Number of data line:It can be viewed according to the number of RGB groups defined by the module interface.

Line decoding mode:as shown in the left figure

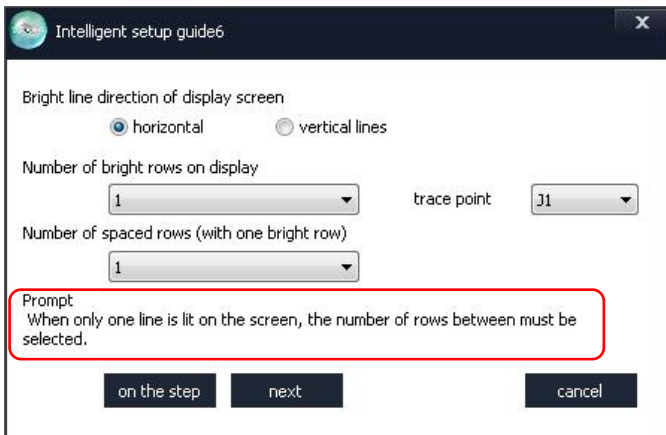
Number of data sets:Conventional and Serial can be selected.

Cascade direction:Left to right/Right to left/Top to bottom/Bottom to top

6. Users can remove the ✓ of <state changes automatically>, and click 1/2/3/4 to change the display state according to the observation of the LED screen.

For example,click <1>and observe the color of LED screen,and select <red> if the LED screen shows red.

After all 4 states being done,click <next>



8. Select <horizontal or vertical lines> according to the actual bright line direction of display screen.

Number of bright rows on display:according to the LED screen

Number of spaced rows:When only one line is lit on the screen,the number of rows between must be selected.

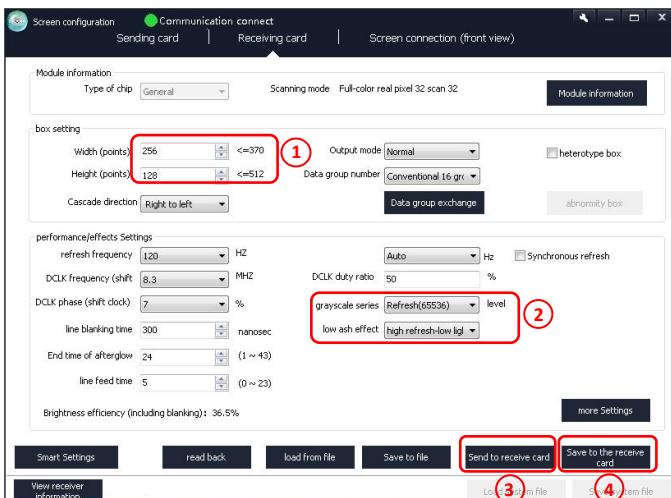


7. Observe the position of the bright spot on the first module of the LED screen, and click the corresponding grid.

If you make a mistake,click <back>to the last step or <reset> to restart.

If you select <Profiled lamp board(with taps)>in 5th step,you need to click blank spots.Observe the first module,and click <unbright spot(blank spot)> if no flash spot appears.

After the settings, a prompt will pop up. Click <OK> and then click <Finish> to confirm.



9. After <Smart Settings>,it will return to <Receiving card>interface and set a new parameters for receiving cards.

① Fill in the total Width/Height of box.

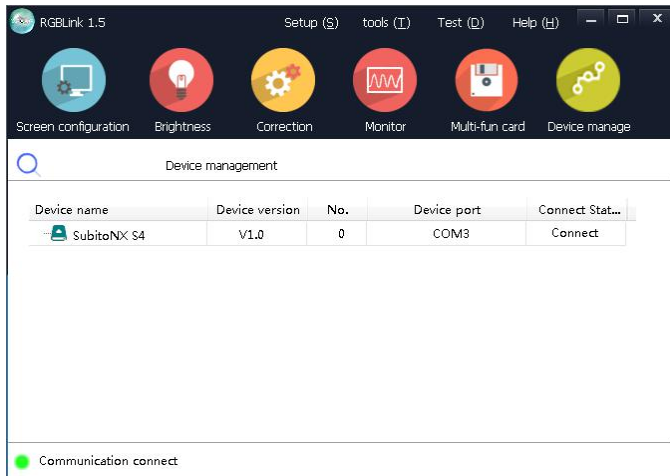
There is no need to adjust other parameters if the image of the single receiving card is normal.

② It is recommended to change <grayscale series>and <low ash effect> to change the refresh rate.

③ **Send to receive card:** Each time you change the parameters, you can click <Send to receive card>and observe the change of the screen.

④ **Save to the receive card:**After debugging,click <Save to the receive card>and the data will not be lost after power off and restart.

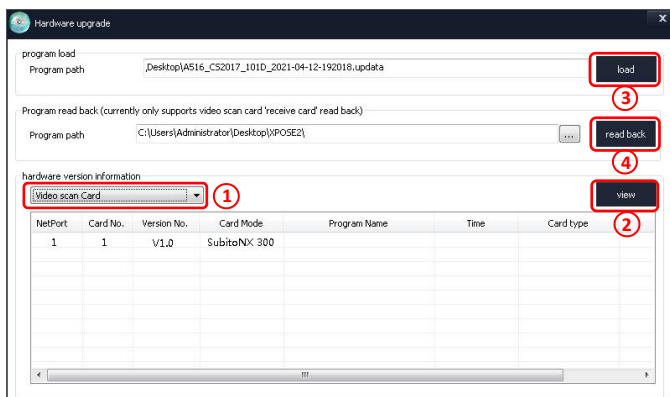
3.5 Upgrade



1. Click <Setup> -- <Hardware upgrade>.

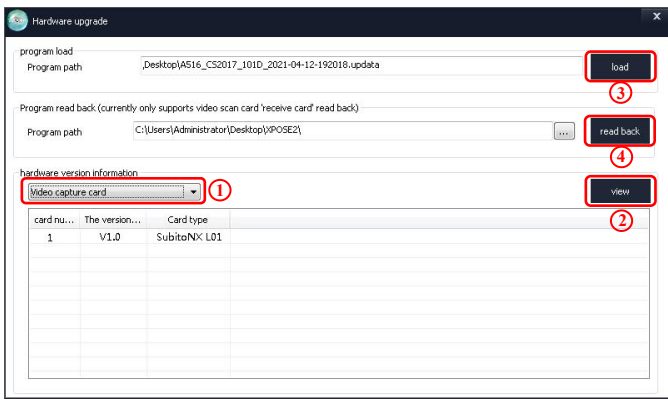


2. Type in password <admin> or 168.



- ① Select <Send Card>
- ② View the version
- ③ Load corresponding send card
- ④ Click <upgrade>

Note:during the upgrade process, do not unplug the serial port to prevent communication disconnection.



- ① Select <Receive Card>
- ② View the version
- ③ Load corresponding send card
- ④ Click <upgrade>,do not unplug the serial port to prevent communication disconnection

Chapter 4 Ordering Codes

4.1 Product

880-1002-01-0 SubitoNX S2

880-1004-01-0 SubitoNX S4

Chapter 5 Support

5.1 Contact Us

www.rgblink.com



Inquiries
☎ +86-592-577-1197
✉ info@rgblink.com
🌐 rgblink.com/contact-us

Global Support
✉ support@rgblink.com
🌐 rgblink.com/support-me



@RGLINK



/rgblink



+rgblink



/rgblink



rgblink



rgblink

**RGblink
Headquarters**

Xiamen, China

6th Floor Weike Building
Torch Park Hi Tech Zone
Huli

✉ sales@rgblink.com

☎ +86-592-577-1197

**China Regional
Sales & Support**

Shenzhen, China

11th Floor Baiwang Building
5318 Shahe West Road
Baimang, Nanshan

☎ +86-755-2153-5149

**Beijing Region
Office**

Beijing, China

Building 8, 25 Qixiao Road
Shahe Town Changping

☎ +86- 4008-592-114

**Europe Regional
Sales & Support**

Eindhoven, Holland

Flight Forum Eindhoven
5657 DW

✉ eu@rgblink.com

☎ +31(040)-202-71-83

**India Regional
Sales & Support**

Mumbai, India

78/626, Motilal Nagar, No1,
Rd No1, Goregaon West,
Mumbai

✉ support@rgblink.com

☎ +91-98200-86718

Chapter 6 Appendix

6.1 Specification

Connectors	Input	DVI	1×DVI
	Output	SubitoNX	4×RJ45
	Audio	Audio In	1×3.5mm audio jack
	Communication	USB	1×USB-B
Performance	Input Resolution	DVI VESA	800×600@60 1024×768@60 1280×768@60 1280×1024@60 1366×768@60 1600×1200@60 1920×1080@60 2048×1152@60
	Output Resolution	SubitoNX VESA	1280×1024@60 1024×1200@60 1920×712@60 2048×668@60 3840×340@60
	SubitoNX Sender	RJ45(each port) Capacity Horizontal Range Vertical Range	2.35m pixels 3840 pixels 1920 pixels
Power	Input Voltage	DC 3.6~12V/0.6A	
	Max Power	3.0W	
Environment	Temperature	-20℃~70℃	
	Humidity	0%~65%	
Physical	Weight	0.5kg	
	Dimension	178.6mm×167.4mm×39.1mm	

*SubitoNX S2 has 2 LAN ports with capacity of 2.31m pixels. Other parameters are consistent with that of SubitoNX S4

6.2 Terms & Definitions

●**RCA**: Connector used primarily in consumer AV equipment for both audio and video. The RCA connector was developed by the Radio Corporation of America.

●**BNC**: Stands for Bayonet Neill-Concelman. A cable connector used extensively in television (named for its inventors). A cylindrical bayonet connector that operates with a twist-locking motion .

●**CVBS**: CVBS or Composite video, is an analog video signal without audio. Most commonly CVBS is used for transmission of standard definition signals. In consumer applications the connector is typically RCA type, while in

professional applications the connector is BNC type.

- **YPbPr:** Used to describe the colour space for progressive-scan. Otherwise known as component video.
- **VGA:** Video Graphics Array. VGA is an analog signal typically used on earlier computers. The signal is non-interlaced in modes 1, 2, and 3 and interlaced when using in mode.
- **DVI:** Digital Visual Interface. The digital video connectivity standard that was developed by DDWG (Digital Display Work Group). This connection standard offers two different connectors: one with 24 pins that handles digital video signals only, and one with 29 pins that handles both digital and analog video.
- **SDI:** Serial Digital Interface. Standard definition video is carried on this 270 Mbps data transfer rate. Video pixels are characterized with a 10-bit depth and 4:2:2 color quantization. Ancillary data is included on this interface and typically includes audio or other metadata. Up to sixteen audio channels can be transmitted. Audio is organised into blocks of 4 stereo pairs. Connector is BNC.
- **HD-SDI:** High-definition serial digital interface (HD-SDI), is standardized in SMPTE 292M this provides a nominal data rate of 1.485 Gbit/s.
- **3G-SDI:** Standardized in SMPTE 424M, consists of a single 2.970 Gbit/s serial link that allows replacing dual link HD-SDI.
- **6G-SDI:** Standardized in SMPTE ST-2081 released in 2015, 6Gbit/s bitrate and able to support 2160p@30.
- **12G-SDI:** Standardized in SMPTE ST-2082 released in 2015, 12Gbit/s bitrate and able to support 2160p@60.
- **U-SDI:** Technology for transmitting large-volume 8K signals over a single cable. a signal interface called the ultra high definition signal/data interface (U-SDI) for transmitting 4K and 8K signals using a single optical cable. The interface was standardized as the SMPTE ST 2036-4.
- **HDMI:** High Definition Multimedia Interface: An interface used for the transmission of uncompressed high definition video, up to 8 channels of audio, and control signals, over a single cable.
- **HDMI 1.3:** Released on June 22 2006, and increased the maximum TMDS clock to 340 MHz (10.2 Gbit/s). Support resolution 1920 × 1080 at 120 Hz or 2560 × 1440 at 60 Hz). It added support for 10 bpc, 12 bpc, and 16 bpc color depth (30, 36, and 48 bit/px), called deep color.
- **HDMI 1.4:** Released on June 5, 2009, added support for 4096 × 2160 at 24 Hz, 3840 × 2160 at 24, 25, and 30 Hz, and 1920 × 1080 at 120 Hz. Compared to HDMI 1.3, 3 more features added which are HDMI Ethernet Channel (HEC) , audio return channel (ARC),3D Over HDMI, a new Micro HDMI Connector, an expanded set of color spaces.
- **HDMI 2.0:** Released on September 4, 2013 increases the maximum bandwidth to 18.0 Gbit/s. Other features of HDMI 2.0 include up to 32 audio channels, up to 1536 kHz audio sample frequency, the HE-AAC and DRA audio standards, improved 3D capability, and additional CEC functions.

● **HDMI 2.0a:** Was released on April 8, 2015, and added support for High Dynamic Range (HDR) video with static metadata.

● **HDMI 2.0b:** Was released March, 2016, support for HDR Video transport and extends the static metadata signaling to include Hybrid Log-Gamma (HLG).

● **HDMI 2.1:** Released on November 28, 2017. It adds support for higher resolutions and higher refresh rates, Dynamic HDR including 4K 120 Hz and 8K 120 Hz.

● **DisplayPort:** A VESA standard interface primarily for video, but also for audio, USB and other data. DisplayPort (orDP) is backwards compatible with HDMI, DVI and VGA.

● **DP 1.1:** Was ratified on 2 April 2007, and version 1.1a was ratified on 11 January 2008. DisplayPort 1.1 allow a maximum bandwidth of 10.8 Gbit/s (8.64 Gbit/s data rate) over a standard 4-lane main link, enough to support 1920x1080@60Hz

● **DP 1.2:** Introduced on 7 January 2010, effective bandwidth to 17.28 Gbit/s support increased resolutions, higher refresh rates, and greater color depth, maximum resolution 3840 × 2160@60Hz

● **DP 1.4:** Publish on 1 Mar, 2016. overall transmission bandwidth 32.4 Gbit/s ,DisplayPort 1.4 adds support for Display Stream Compression 1.2 (DSC), DSC is a "visually lossless" encoding technique with up to a 3:1 compression ratio. Using DSC with HBR3 transmission rates, DisplayPort 1.4 can support 8K UHD (7680 × 4320) at 60 Hz or 4K UHD (3840 × 2160) at 120 Hz with 30 bit/px RGB color and HDR. 4K at 60 Hz 30 bit/px RGB/HDR can be achieved without the need for DSC.

● **Multi-mode Fiber:** Fibers that support many propagation paths or transverse modes are called multi-mode fibers, generally have a wider core diameter and are used for short-distance communication links and for applications where high power must be transmitted.

● **Single-mode Fiber:** Fiber that support a single mode are called single-mode fibers. Single-mode fibers are used for most communication links longer than 1,000 meters (3,300 ft).

● **SFP:** Small form-factor pluggable , is a compact, hot-pluggable network interface module used for both telecommunication and data communications applications.

● **Optical Fiber Connector:** Terminates the end of an optical fiber, and enables quicker connection and disconnection than splicing. The connectors mechanically couple and align the cores of fibers so light can pass. 4 most common types of optical fiber connectors are SC, FC, LC,ST.

● **SC:** (Subscriber Connector), also known as the square connector was also created by the Japanese company – Nippon Telegraph and Telephone. SC is a push-pull coupling type of connector and has a 2.5mm diameter. Nowadays, it is used mostly in single mode fiber optic patch cords, analog, GBIC, and CATV. SC is one of the most popular options, as its simplicity in design comes along with great durability and affordable prices.

● **LC:** (Lucent Connector) is a small factor connector (uses only a 1.25mm ferrule diameter) that has a snap coupling

mechanism. Because of its small dimensions, it is the perfect fit for high-density connections, XFP, SFP, and SFP+ transceivers.

- **FC:** (Ferrule Connector) is a screw type connector with a 2.5mm ferrule. FC is a round shaped threaded fiber optic connector, mostly used on Datacom, telecom, measurement equipment, single-mode laser.

- **ST:** (Straight Tip) was invented by AT&T and uses a bayonet mount along with a long spring-loaded ferrule to support the fiber.

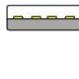
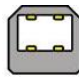
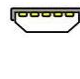

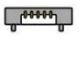
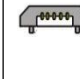
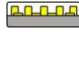

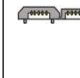

- **USB:** Universal Serial Bus is a standard that was developed in the mid-1990s that defines cables, connectors and communication protocols. This technology is designed to allow a connection, communication and power supply for peripheral devices and computers.

- **USB 1.1:** Full-Bandwidth USB, specification was the first release to be widely adopted by the consumer market. This specification allowed for a maximum bandwidth of 12Mbps.

- **USB 2.0:** or Hi-Speed USB, specification made many improvements over USB 1.1. The main improvement was an increase in bandwidth to a maximum of 480Mbps.

- **USB 3.2:** Super Speed USB with 3 varieties of 3.2 Gen 1(original name USB 3.0), 3.2Gen 2(original name USB 3.1), 3.2 Gen 2x2 (original name USB 3.2) with speed up to 5Gbps,10Gbps,20Gbps respectively.

USB version and connectors figure:

	Type A	Type B	Mini A	Mini B	Micro-A	Micro-B	Type C
USB 2.0							
USB 3.0							
USB 3.1&3.2							

- **NTSC:** The colour video standard used in North America and some other parts of the world created by the National Television Standards Committee in the 1950s. NTSC utilizes an interlaced video signals.

- **PAL:** Phase Alternate Line. A television standard in which the phase of the colour carrier is alternated from line to line. It takes four full images (8 fields) for the colour-to-horizontal images (8 fields) for the colour-to-horizontal phase relationship to return to the reference point. This alternation helps cancel out phase errors. For this reason, the hue control is not needed on a PAL TV set. PAL, is widely used in needed on a PAL TV set. PAL, is widely used in Western Europe, Australia, Africa, the Middle East, and Micronesia. PAL uses 625-line, 50-field (25 fps) composite colour

transmission system.

- **SMPTTE:** Society of Motion image and Television Engineers. A global organization, based in the United States, that sets standards for baseband visual communications. This includes film as well as video and television standards.
- **VESA:** Video Electronics Standards Association. An organization facilitating computer graphics through standards.
- **HDCP:** High-bandwidth Digital Content Protection (HDCP) was developed by Intel Corporation and is in wide use for protection of video during transmission between devices.
- **HDBaseT:** A video standard for the transmission of uncompressed video (HDMI signals) and related features using Cat 5e/Cat6 cabling infrastructure.
- **ST2110:** A SMPTE developed standard, ST2110 describes how to send digital video over and IP networks. Video is transmitted uncompressed with audio and other data in a separate streams. SMPTE2110 is intended principally for broadcast production and distribution facilities where quality and flexibility are more important.
- **SDVoE:** Software Defined Video over Ethernet (SDVoE) is a method for transmission, distribution and management AV signals using a TCP/IP Ethernet infrastructure for transport with low latency. SDVoE is commonly used in integration applications.
- **Dante AV:** The Dante protocol was developed for and widely adopted in audio systems for the transmission of uncompressed digital audio on IP based networks. The more recent Dante AV specification includes support for digital video.
- **NDI:** Network Device interface (NDI) is a software standard developed by NewTek to enable video-compatible products to communicate, deliver, and receive broadcast quality video in a high quality, low latency manner that is frame-accurate and suitable for switching in a live production environment over TCP (UDP) Ethernet based networks. NDI is commonly found in broadcast applications.
- **RTMP:** Real-Time Messaging Protocol (RTMP) was initially a proprietary protocol developed by Macromedia (now Adobe) for streaming audio, video and data over the Internet, between a Flash player and a server.
- **RTSP:** The Real Time Streaming Protocol (RTSP) is a network control protocol designed for use in entertainment and communications systems to control streaming media servers. The protocol is used for establishing and controlling media sessions between end points.
- **MPEG:** Moving Picture Experts Group is a working group formed from ISO and IEC developing standards that allow audio/video digital compression and Transmission.
- **H.264:** Also known as AVC (Advanced Video Coding) or MPEG-4i is a common video compression standard. H.264 was standardized by the ITU-T Video Coding Experts Group (VCEG) together with the ISO/IEC JTC1 Moving Picture

Experts Group (MPEG).

●**H.265:** Also known as **HEVC** (High Efficiency Video Coding) H.265 is the successor to the widely used H.264/AVC digital video coding standard. Developed under the auspices of ITU, resolutions up to 8192x4320 may be compressed.

●**API:** An Application Programming Interface (API) provides a predefined function which allows access capabilities and features or routines via a software or hardware, without accessing source code or understanding the details of inner working mechanism. An API call may execute a function and/or provide data feedback/report.

●**DMX512:** The communication standard developed by USITT for entertainment and digital lighting systems. The wide adoption of the Digital Multiplex (DMX) protocol has seen the protocol used for a wide range of other devices including video controllers. DMX512 is delivered over cable of 2 twisted pairs with 5pin XLR cables for connection.

●**ArtNet:** An ethernet protocol based on TCP/IP protocol stack, mainly used in entertainment/events applications. Built on the DMX512 data format, ArtNet enables multiple “universes” of DMX512 to be transmitted using ethernet networks for transport.

●**MIDI:** MIDI is the abbreviation of Musical Instrument Digital Interface. As the name indicates the protocol was developed for communication between electronic musical instruments and latterly computers. MIDI instructions are triggers or commands sent over twisted pair cables, typically using 5pin DIN connectors.

●**OSC:** The principle of Open Sound Control (OSC) protocol is for networking sound synthesizers, computers, and multimedia devices for musical performance or show control. As with XML and JSON, the OSC protocol allows sharing data. OSC is transported via UDP packets between devices connected on an Ethernet.

●**Brightness:** Usually refers to the amount or intensity of video light produced on a screen without regard to colour. Sometimes called black level.

●**Contrast Ratio:** The ratio of the high light output level divided by the low light output level. In theory, the contrast ratio of the television system should be at least 100:1, if not 300:1. In reality, there are several limitations. Well-controlled viewing conditions should yield a practical contrast ratio of 30:1 to 50:1.

●**Colour Temperature:** The colour quality, expressed in degrees Kelvin (K), of a light source. The higher the colour temperature, the bluer the light. The lower the temperature, the redder the light. Benchmark colour temperature for the A/V industry include 5000°K, 6500°K, and 9000°K.

●**Saturation:** Chroma, Chroma gain. The intensity of the colour, or the extent to which a given colour in any image is free from white. The less white in a colour, the truer the colour or the greater its saturation. Saturation is the amount of pigment in a colour, and not the intensity.

●**Gamma:** The light output of a CRT is not linear with respect to the voltage input. The difference between what you should have and what is actually output is known as gamma.

-
- **Frame:** In interlaced video, a frame is one complete image. A video frame is made up of two fields, or two sets of interlaced lines. In a film, a frame is one still image of a series that makes up a motion image.
 - **Genlock:** Allows synchronisation of otherwise video devices. A signal generator provides a signal pulses which connected devices can reference. Also see Black Burst and Color Burst.
 - **Blackburst:** The video waveform without the video elements. It includes the vertical sync, horizontal sync, and the Chroma burst information. Blackburst is used to synchronize video equipment to align the video output.
 - **Colour Burst:** In colour TV systems, a burst of subcarrier frequency located on the back part of the composite video signal. This serves as a colour synchronizing signal to establish a frequency and phase reference for the Chroma signal. Colour burst is 3.58 MHz for NTSC and 4.43 MHz for PAL.
 - **Colour Bars:** A standard test pattern of several basic colours (white, yellow, cyan, green, magenta, red, blue, and black) as a reference for system alignment and testing. In NTSC video, the most commonly used colour bars are the SMPTE standard colour bars. In PAL video, the most commonly used colour bars are eight full field bars. On computer monitors the most commonly used colour bars are two rows of reversed colour bars
 - **Seamless Switching:** A feature found on many video switchers. This feature causes the switcher to wait until the vertical interval to switch. This avoids a glitch (temporary scrambling) which often is seen when switching between sources.
 - **Scaling:** A conversion of a video or computer graphic signal from a starting resolution to a new resolution. Scaling from one resolution to another is typically done to optimize the signal for input to an image processor, transmission path or to improve its quality when presented on a particular display.
 - **PIP:** Picture-In-Picture. A small image within a larger image created by scaling down one of image to make it smaller. Other forms of PIP displays include Picture-By-Picture (PBP) and Picture- With-Picture (PWP), which are commonly used with 16:9 aspect display devices. PBP and PWP image formats require a separate scaler for each video window .
 - **HDR:** is a high dynamic range (HDR) technique used in imaging and photography to reproduce a greater dynamic range of luminosity than what is possible with standard digital imaging or photographic techniques. The aim is to present a similar range of luminance to that experienced through the human visual system.
 - **UHD:** Standing for Ultra High Definition and comprising 4K and 8K television standards with a 16:9 ratio, UHD follows the 2K HDTV standard. A UHD 4K display has a physical resolution of 3840x2160 which is four times the area and twice both the width and height of a HDTV/FullHD (1920x1080) video signal.
 - **EDID:** Extended Display Identification Data. EDID is a data structure used to communicate video display information, including native resolution and vertical interval refresh rate requirements, to a source device. The source device will then output the provided EDID data, ensuring proper video image quality.

6.3 Revision History

The table below lists the changes to the User Manual.

Format	Time	ECO#	Description	Principal
V1.0	2021-06-25	0000#	Release	Sylvia

All information herein is Xiamen RGBlink Science & Technology Co Ltd. excepting noted.

视诚 RGBlink® RGBlink® is a registered trademark of Xiamen RGBlink Science & Technology Co Ltd.

While all efforts are made for accuracy at time of printing, we reserve the right to alter otherwise make change without notice.