

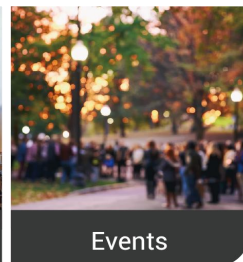
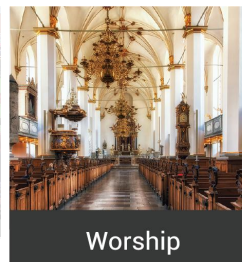
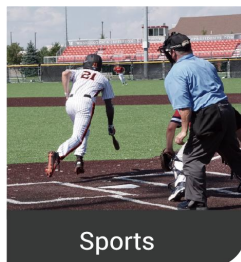
RGBlink®



mini-edge

5 Channel All-in-One Switcher

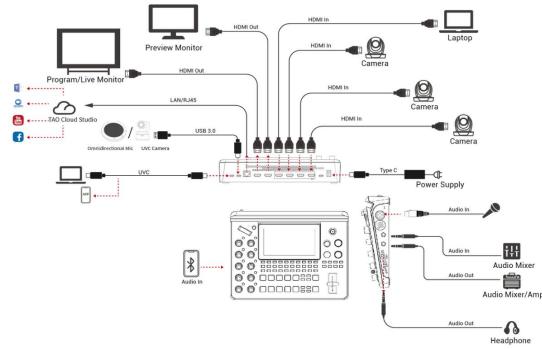
mini-edge is an affordable and portable All-In-One switcher, it is dedicated to born for the content production, brings to the industry with 5 live video inputs including 4 x HDMI 2.0 and 1 x UVC, and content channels for background graphic, caption and logo overlay, 8 channel audio mixed even with 1 x bluetooth, 1 x Type-C bi-direction connection. The live video, audio and content inputs go to the production pipeline with multi-layer and mixing control, output by 2 x HDMI, 1 x UVC, and streaming to the cloud. mini-edge is not only suitable for multi-platform live broadcasts and remote audio and video conference, but also ready to be widely used for various live events such as stages, education, press conferences, and sports games, with providing high-quality content and plenty functions, while having excellent cost performance.



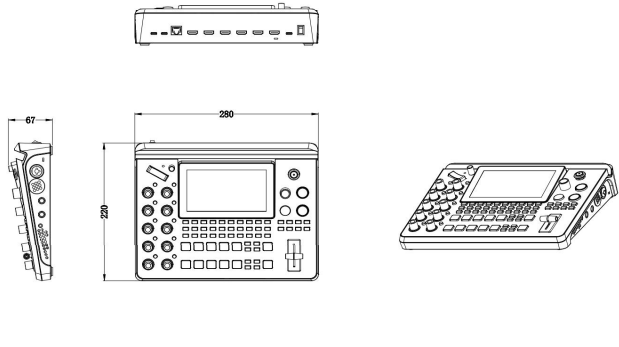
Key Features

- Built-in 5.5 inch LCD screen
- Quad HDMI 2.0 inputs (HDCP compliance), resolutions up to 4K@60
- One USB (UVC) input supports camera source from RGBlink vue PTZ and webCAM
- Eight audio inputs with Four HDMI 2.0 embedded audio inputs and Four external audio inputs (one MIC, one LINE, one Bluetooth and one Type-C digital audio)
- Eight audio inputs allow for output of mixed audio across one or all available channels
- Dual HDMI 1.3 outputs for monitoring of multi-window PVW, PGM or AUX
- Dual audio out jacks for listening
- One-key recording. Recording capacity of hard drive is up to 2TB^[1]
- Support simultaneous streaming to 4 live streaming platforms via RTMP(S)^[2]
- Support multi-layer overlay, layer scaling and cropping
- 17 switching effect modes
- 5-direction joystick for controlling up to 4 PTZ cameras
- Support saving up to 10 scene presets and thumbnails for real-time full preview
- Web control and monitoring, compatible with mobile devices and computers, compatible with multiple operating systems
- Support Chroma Key
- 5G/4G Smartphone Tethering for iOS and Android system
- Air cooling design to ensure 24/7 stable operation

Application



Dimension



Specification

mini series mini-edge

Connectors	Input	HDMI 4K	4×HDMI-A	
		UVC (Webcam)	1×USB-C	
	Output	HDMI 2K	2×HDMI-A	
		USB (Record)	1×USB-C	
		USB (Stream)	1×USB-C	
Audio	MIC IN	1×6.35mm XLR/6.35mm TRS Jack		
	LINE IN	1×6.35mm TRS Jack		
	OUT	1×6.35mm TRS Jack		
		1×3.5mm mini-Jack		
Communication	LAN	1×RJ45		
Power	Power Supply	1×USB-C		
Performance	Input Resolution	HDMI	1280×720@50/59.94/60 1024×768@60 1280×768@60 1280×800@60 1280×1024@60 1366×768@60 1366×768@60 1440×900@60 1600×1200@60 1680×1050@60 1920×1200@60 1920×1080i@50/59.94/60 1920×1080p@23.98/24/25/29.97/30/50/59.94/60 3840×2160p@30/50/60 4096×2160@30/50/60	
	Output Resolution	HDMI	1280×720@50/60 1920×1080@60 3840×1080@30	
		USB (Webcam)	1920×1080@24/25/30/50/60	
	Video	Video Formats	HDMI 2.0 HDCP 2.2	
		Grayscale Processing	10bit	
		Video Sampling	4:4:4 YUV	
		Video Latency	<4 frames	
	Audio	Line In Delay	up to 8 frames	
		Audio Format	HDMI	Linear PCM, 24 bits/48 kHz, 2 ch
		USB	Linear PCM, 16 bits/48 kHz, 2 ch	
Record/Storage	Record Formats	MP4		
	Disk Formats	FAT32(≤32 GB) exFAT(64GB~2T)		
Supported Standards	HDMI	2.0		
	USB	3.0		
	H.265	ITU-T H.265/ ISO/IEC 23008-2		
Power	Compatibility	USB Power Delivery (PD) 3.0		
	Supported Cables	Certified USB PD Aware		
	Input Voltage	Type-C 12V/3A		
	Maximum Power	36W		
Environment	Temperature	0℃~45℃		
	Humidity	10%~85% RH		
Physical	Net Weight	1.48kg		
	Packaged Weight	2.80kg		
	Net Dimension	280.0mm × 220.0mm × 67.0mm		
	Packaged Dimension	332.0mm × 238.5mm × 109.0mm		

Order Codes

Order Codes	Item
230-0006-01-0	mini-edge

[1] Recommended but not limited to 2TB.

[2] Simultaneously streaming on multiple platforms depends on the network.

Contact us

Tel: +86-592-5771197
 Fax: +86-592-5788216
 E-mail: sales@rgbink.com
 Headquarter: Room 601A, No. 37-3 Banshang community, Building 3,
 Xinke Plaza, Torch Hi-Tech Industrial Development Zone, Xiamen, China



www.rgbink.com