



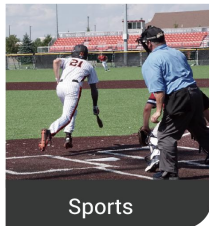
mini-edge-2s-subito

All-In-One Portable Case for mini-edge

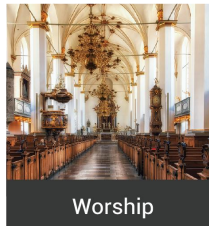
This Dedicated Portable Case made of high-strength PP material is equipped with one 13.3-inch IPS display, one switcher and one LED control card. Integrated audio and video switching, PTZ camera control, multi-view monitoring, recording, LED management in one case, this portable and shock-resistant carry case is perfect for all sites, from music festival to lawn wedding, sports competition and other outdoor activities.



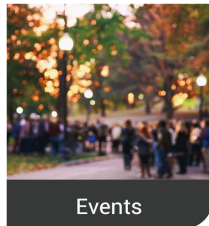
Education



Sports



Worship



Events

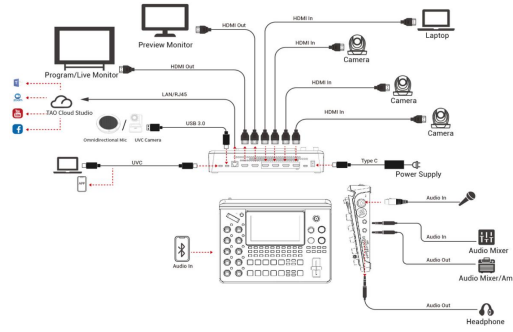


Conference

Key Features

- Professional aviation connector to ensure high-quality performance
- Flexible standard connectors to meet personalized application
- Built-in 13.3" HD IPS monitor
- High strength PP flightcase features long-lasting durability
- hydraulic rod support to enhance the stability
- Powerful air-cooling system designed for outdoor use
- Built-in 5.5 inch LCD screen for mini-edge
- Quad HDMI 2.0 inputs (HDCP compliance), resolutions up to 4K@60
- One USB (UVC) input supports camera source from RGBlink vue PTZ and webCAM
- Eight audio inputs with Four HDMI 2.0 embedded audio inputs and Four external audio inputs (one MIC, one LINE, one Bluetooth and one Type-C digital audio)
- Eight audio inputs allow for output of mixed audio across one or all available channels
- Dual HDMI 1.3 outputs for monitoring of multi-window PVW, PGM or AUX
- Dual audio out jacks for listening
- One-key recording. Recording capacity of hard drive is up to 2TB
- Support simultaneous streaming to 4 live streaming platforms via RTMP(S)
- Support multi-layer overlay, layer scaling and cropping
- 17 switching effect modes
- 5-direction joystick for controlling up to 4 PTZ cameras
- Support saving up to 10 scene presets and thumbnails for real-time full preview
- Web control and monitoring, compatible with mobile devices and computers, compatible with multiple operating systems
- Support Chroma Key
- 5G/4G Smartphone Tethering for iOS and Android system
- Air cooling design to ensure 24/7 stable operation
- XPOSE control

Application



Specification

Connectors	Input	HDMI 4K	2×HDMI-A
		SDI	2×BNC
	Output	UVC (webcam)	1×USB-C
		HDMI 2K	1×HDMI-A
		SDI	1×BNC
		UVC	1×USB-C
		USB (record)	1×USB-C
	Audio In	LAN (stream)	1×RJ45
		LAN (subito)	4×RJ45
		MIC	1×CANNON Jack (XLR)
LINE		1×6.35mm TRS Jack	
Bluetooth		1×Bluetooth Module	
UAC		1×USB-C	
Audio Out	HDMI	2×HDMI-A	
	SDI	2×BNC	
	AUDIO	1×6.35mm TRS Jack	
		1×3.5mm mini-Jack	
	HDMI	1×HDMI-A	
Control	SDI	1×BNC	
	USB (subito)	1×USB-B	
Performance	Input Resolution	HDMI	1280×720@50/59.94/60 1024×768@60 1280×768@60 1280×800@60 1280×1024@60 1360×768@60 1366×768@60 1440×900@60 1600×1200@60 1680×1050@60 1920×1200@60 1920×1080i@50/59.94/60 1920×1080p@23.98/24/25/29.97/30/50/59.94/60 3840×2160p@30/50/60 4096×2160p@30/50/60
		SDI	1080P@23.98/24/25/29.97/30/50/59.94/60
	Output Resolution	HDMI	1280×720@50/60 1920×1080@60 3840×1080@30
		SDI	1080P@23.98/24/25/29.97/30/50/59.94/60
		USB (Webcam)	1920×1080@24/25/30/50/60
	Video	Video Formats	HDMI 2.0 HDCP 2.2
		Grayscale Processing	10bit
		Video Sampling	4:4:4 YUV
		Video Latency	<4 frames
	Audio	Line In Delay	up to 8 frames
Audio Format		HDMI Linear PCM, 24 bits/48 kHz, 2 ch USB Linear PCM, 16 bits/48 kHz, 2 ch	
Record/Storage	Record Formats	MP4	
	Disk Formats	FAT32(±32 GB) exFAT(64GB~2T)	
Supported Standards	HDMI	2.0	
	USB	3.0	
	H.265	ITU-T H.265/ ISO/IEC 23008-2	
13.3" Display	Screen Size	13.3"	
	Panel Type	IPS	
	Display Color	16.7M, 72%NTSC/16.7M, 100%SRGB	
	Resolution	1920×1080 pixels	
	Aspect Ratio	1000:1	
	Gamut	72%	
	Brightness	350 cd/m ²	
	Refresh Rate	60Hz	
Subito	View Angle	85°/85°(L/R) 85°/85°(U/D)	
	RJ45(each port)		
	Capacity	655,360 pixels	
	Horizontal Range	3840 pixels	
Power	Vertical Range	2048 pixels	
	Input Voltage	PD 12V/5A	
	Maximum Power	60W	
Physical	Outer Size	460mm × 360 mm × 200mm	
	Material	PP	
	Color	Black	
	Packaged Weight	9.23 kg	
Packaged Dimension	470mm × 370mm × 210mm		

Order Codes

Order Codes	Item
230-0006-07-0	mini-edge-2s-subito (1 × mini-edge + 1×Flightcase Suite + 1 × 13.3" Display + 1 × subito Sending Card)

Contact us

Tel: +86-592-5771197
 Fax: +86-592-5788216
 E-mail: sales@rgblink.com
 Headquarter: Room 601A, No. 37-3 Banshang community, Building 3,
 Xinke Plaza, Torch Hi-Tech Industrial Development Zone, Xiamen, China

RGBlink
 www.rgblink.com

